

3rd Floor, De La Poste House, 59 - 61 King Street, St. Helier, Jersey



OFFICE
TO LET

NET
INTERNAL
AREA
459 SQ.FT.

NEWLY
REFURBISHED
ACCOMODATION

T +44 (0) 1534 629001
E info@d2re.co.uk
W www.d2re.co.uk

Office Address

Ground Floor, Dialogue House,
2-6 Anley Street, St Helier, Jersey, JE2 3QE
Company number: 80923

An alliance member of
**BNP PARIBAS
REAL ESTATE**

Regulated by RICS

LOCATION

This property is located to the centre of King Street with a return frontage onto Broad street. The premises occupy a prominent position in a central location.

King street is also located a short walk away from the revitalised Weighbridge area of town, the newly constructed Liberty Wharf mixed use scheme and the proposed new International Finance Centre on the Esplanade.

DESCRIPTION

The building comprises an end of terrace 4 storey property, of assumed masonry construction with a ground floor retail unit, currently occupied by Café Ube, and offices on the upper three floors.

The offices have been refurbished to a modern Cat A specification and comprise of suspended ceilings, LED lighting, double glazing and air conditioning. Perimeter trunking with plug sockets and data outlets have been installed and can be expanded as required.

The suite benefits from excellent natural light and comprises a lobby area which leads to the open plan office area and meeting room. The suite also comes fully equipped with a tea point and WC.

ACCOMMODATION

The 3rd floor totals 459 sq. ft.

AVAILABILITY

The premises are available immediately.

LEASE TERMS

The premises are available by way of a minimum of a 2-year internal repairing and insuring lease.

RENTAL

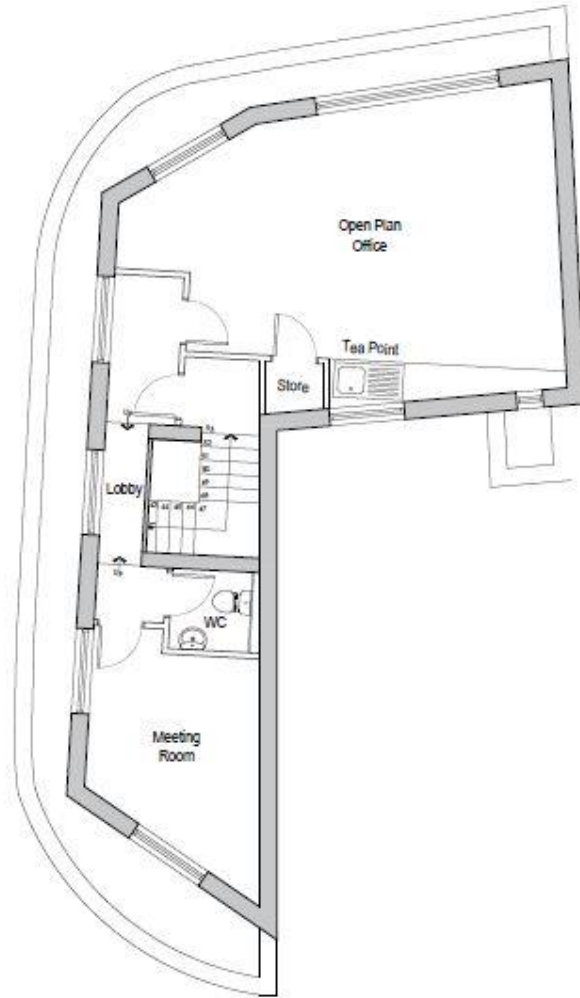
The premises are available at a quoting rental of £14,400 per annum

All rentals quoted are inclusive of all other outgoings and GST if applicable but excluding rates, A/C maintenance and communal cleaning fees.

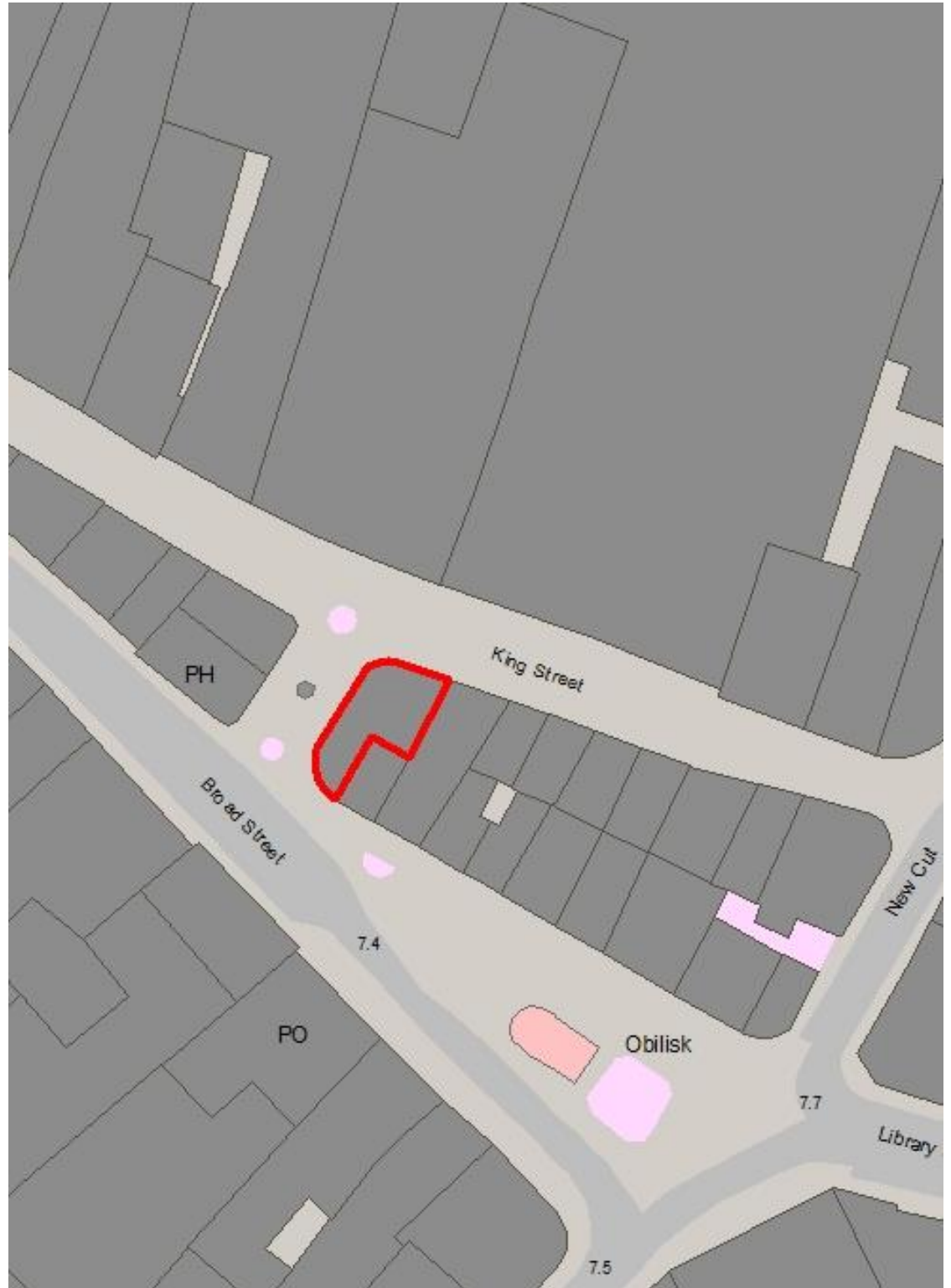
LEGAL COSTS

Each party to bear their own legal costs and any other cost incurred in the letting of this property.

FLOOR PLAN



LOCATION MAP



VIEWING

Strictly by appointment
with the Lessor's sole
agent;

D2 REAL ESTATE
Ground Floor, Dialogue
House 2 – 6 Anley Street
St. Helier Jersey, JE2
3QE

CONTACT
Nick Trower MRICS

TELEPHONE
01534 716233

EMAIL
nick.trower@d2re.co.uk