

1st Floor, Charter Place, 23 – 27 Seaton Place, St. Helier, Jersey



PRIME
OFFICE
TO LET

NET
INTERNAL
AREA
8,203 SQ.FT.

GOOD QUALITY
OFFICE
ACCOMODATION



T +44 (0) 1534 629001
E info@d2re.co.uk
W www.d2re.co.uk

Office Address

Ground Floor, Dialogue House,
2-6 Anley Street, St Helier, Jersey, JE2 3QE
Company number: 80923

An alliance member of
**BNP PARIBAS
REAL ESTATE**

Regulated by RICS

LOCATION

Charter Place is situated in a prominent position within the Island's premier office location which comprises a plethora of financial, legal, administrative and fund management occupiers including; HSBC, Ogiers, Elian, Carey Olsen, SG Hambros, Ernst & Young, PWC, KPMG, Deloitte, First Names, Citibank, Aberdeen Asset Management and The Aztec Group.

The property is located on Seaton Place which runs parallel to the Esplanade. It is a short walk from the revitalised Weighbridge area of town, Liberty Wharf mixed use scheme, the Jersey International Finance Centre and the burgeoning Waterfront development area in addition to mail retail areas of King Street and Queen Street.

DESCRIPTION

Charter Place comprises a prominent, modern office building constructed in 2003, totalling approximately 35,120 sq ft (3,263 sq m) of accommodation.

The building allows for flexible, open plan space and is arranged over basement and five upper storeys. Internally there is a large attractive atrium which provides excellent natural light throughout the building and houses two 13-person lifts.

The specification includes:

- Two high speed, 13-person wall climbing lifts
- Fully integrated VRV air-conditioning system
- Metal encapsulated full raised access flooring
- Suspended ceilings with integral low energy recessed lighting
- Showers and toilet facilities on each floor
- 22 basement car parking spaces and bike parking.

ACCOMMODATION

The first floor is available to let and totals 8,203 sq.ft (762.08 sq.m).

In addition, there is 1 secure basement parking space available with the first-floor offices.

AVAILABILITY

The premises are available from 5th March 2021.

LEASE TERMS

The length of lease and quoting rental are by negotiation with further details available upon application.

RENTAL

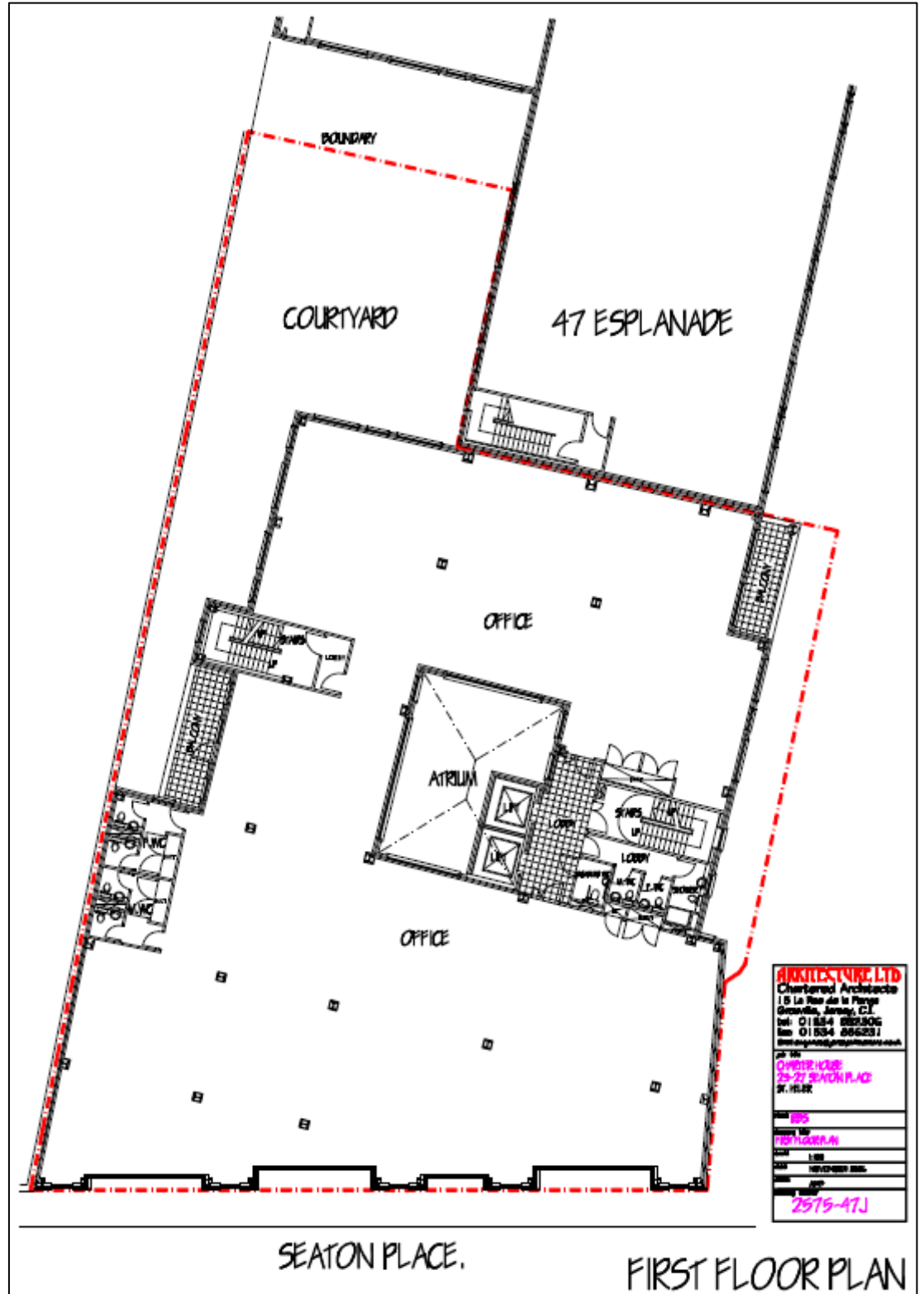
The premises are available at a rental of £28 psf.

LEGAL COSTS

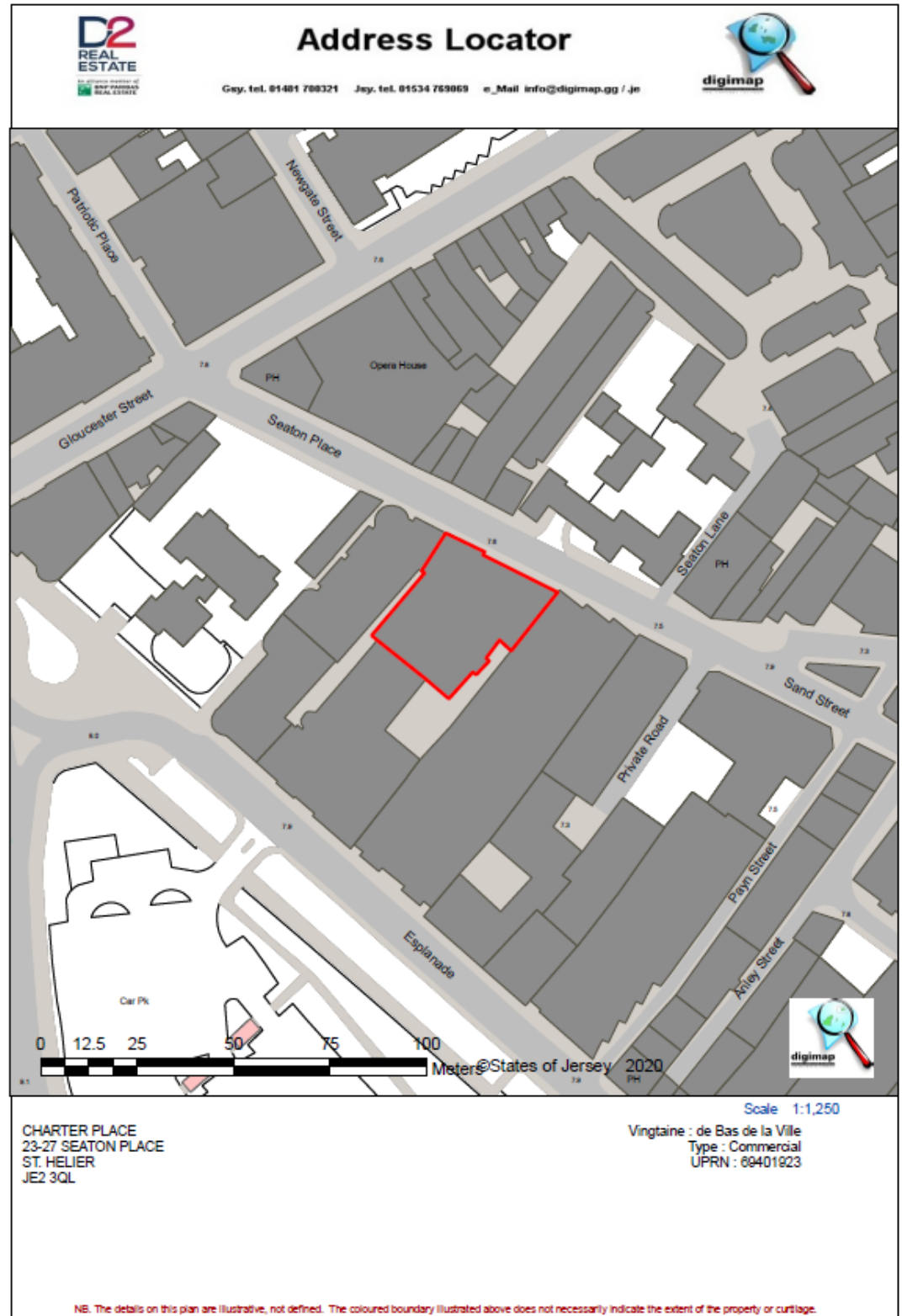
Each party to bear their own legal costs and any other costs in the Letting of this Property.



FLOOR PLAN



LOCATION MAP



VIEWING

Strictly by appointment
with the Lessor's joint
sole agent;

D2 REAL ESTATE

Ground Floor, Dialogue
House 2 – 6 Anley Street
St. Helier Jersey, JE2
3QE

CONTACT

Nick Trower MRICS

TELEPHONE

01534 716233

EMAIL

nick.trower@d2re.co.uk