

Valuation Services

WHY D2 REAL ESTATE?

- Largest team of qualified registered valuers in The Channel Islands
- An alliance member of the BNP Paribas Real Estate Group, giving D2RE the ability to work jointly with BNP Paribas on larger and specialist valuations
- Responsive approach, aiming for a 2 week turnaround from receipt of full information
- Within the last 12 months D2RE was appointed on valuations aggregating in excess of £250m, including portfolios and development schemes.
- The first consultancy in The Channel Islands to produce market research reports

GENERAL BACKGROUND

D2 Real Estate are the market leaders in The Channel Islands for valuation services with a team of five RICS registered valuers based in both Jersey and Guernsey.

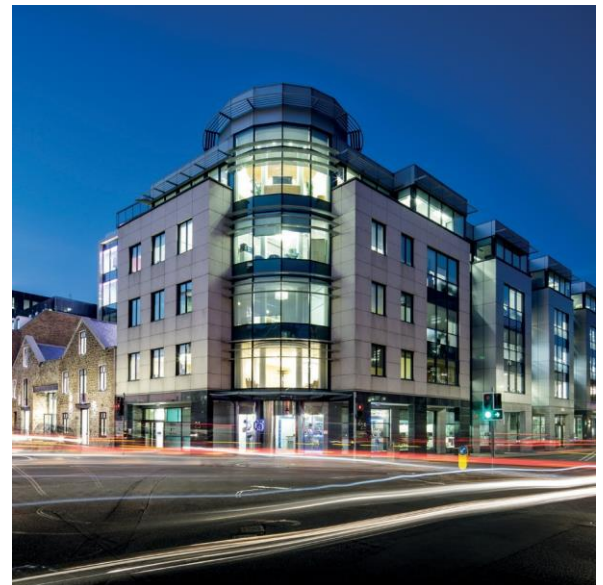
D2 is the only practice in The Channel Islands to have full time qualified Chartered Surveyors based in both Islands. In addition, D2 benefit from access to support from specialist teams under a formalised alliance agreement with BNP Paribas Real Estate.

D2 pride themselves on their local market research and market intelligence across both Jersey and Guernsey which arguably sets them apart, being the first practice to publish regular sector specific research reports in The Channel Islands.

BNP PARIBAS ALLIANCE

Under the formal alliance agreement in place with BNP Paribas Real Estate, they are committed to provide their alliance members with access to central professional services and to central training services. Furthermore, the team at D2 Real Estate continue to work closely with BNPPRE staff on a number of joint agency instructions and research initiatives thereby retaining good working relations with principal contacts across the wider business.

In respect of the valuation business line D2 are able to call on the UK valuation team for general advice, training and engage with them on a regular basis. For some larger instructions and specialist valuations D2 have the ability to work alongside BNP Paribas Real Estate UK.



TRACK RECORD

The team at D2 Real Estate have a wealth of valuation experience, with all members of the team having significant experience advising on institutional grade commercial property as well as residential property including development schemes both in The Channel Islands and the UK. In addition, certain members of the team have some experience in specialist sectors such as licenced & leisure premises, care homes and social housing, within the local context.

D2 continue to be instructed by major lenders locally, such as The Royal Bank of Scotland International, Santander International, HSBC, Lloyds, Barclays & Investec etc.

In addition to valuations for loan security D2 provide valuations for a range of other purposes such as for financial reporting, litigation and strategic reviews along with advice on acquisition / disposal.



D2 aim to turn around valuations within 2 weeks of instruction and are happy to have a discussion on their initial views prior to formal reporting, to ensure all factors are considered and that any transaction can run as smoothly as possible.

Within the last 12 months, D2RE were appointed on:

- Valuations of over 75 individual property assets
- 4 portfolios, values of which ranging up to £30 million
- Overall valuations aggregating in excess of £250 million
- 11 development schemes with aggregate GDV in excess of £77 million

VALUATION SOFTWARE

In line with other leading valuers in the UK, D2 Real Estate utilise the latest versions of Argus valuation software, ensuring clarity, transparency and consistency in valuation calculations and reporting thereon.

PROFESSIONAL INDEMNITY

Favourable level of cover - details of which is available on request.

CONTACTS



Chris Hamilton

Head of Valuation
chris.hamilton@d2re.co.uk
+44 1534716232



Nick Trower

Head of Agency
nick.trower@d2re.co.uk
+44 1534716233



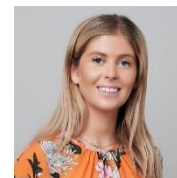
Phil Dawes

Managing Director
phil.dawes@d2re.co.uk
+44 1534716230



Chris Daniels

Director
chris.daniels@d2re.co.uk
+44 1534716231



Emily Le Gallais

Graduate Surveyor
emily.legallais@d2re.co.uk
+44 1534716235

JERSEY

T+44 (0) 1534 629001
E info@d2re.co.uk

4th Floor, Conway House, 7-9 Conway Street,
St Helier, Jersey, JE2 3NT

GUERNSEY

T+44 (0) 1481 723375
E info@d2re.co.uk

Suite 1, Carinthia House,
The Grange, St Peter Port, Guernsey, GY1 2NU